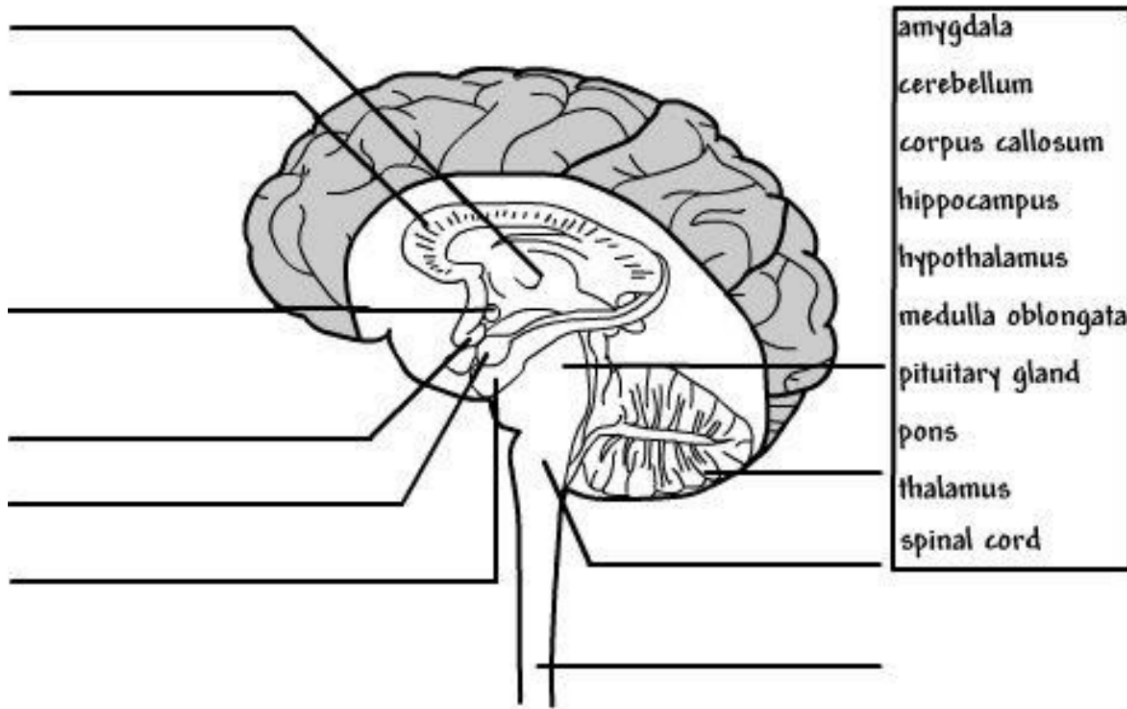


Name: _____

Date: _____

Inside the Brain

Directions: Label the parts of the brain below and color them according to the instructions.



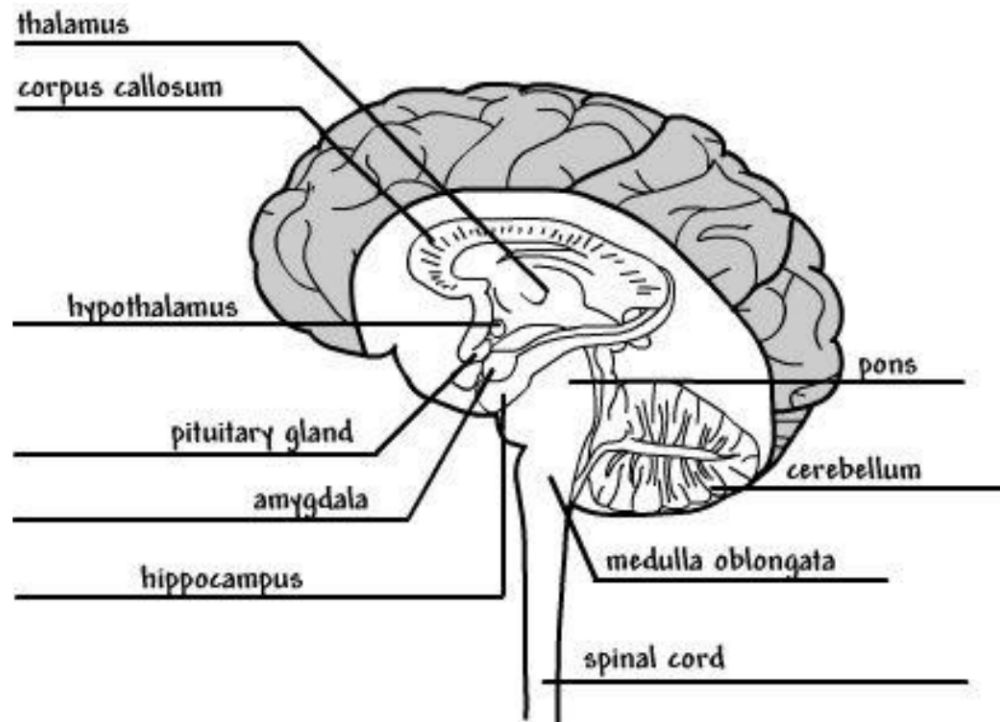
COLOR

- | | |
|-------------|--|
| red | • carries information from the brain to the rest of the body |
| pink | • regulates sex hormones, blood-pressure, and body temperature |
| orange | • helps form emotional reactions |
| yellow | • connects the medulla oblongata and cerebellum with the rest of the brain |
| light green | • controls movement and balance |
| dark green | • controls other glands and influences growth |
| light blue | • helps form and store memories |
| dark blue | • relays sensory information to the cerebral cortex |
| purple | • carries information from one side of the brain to the other |
| brown | • controls vital functions like breathing and heart rate |

Name: _____

Date: _____

Inside the Brain Answer Key



COLOR

- spinal cord** • carries information from the brain to the rest of the body
- hypothalamus** • regulates sex hormones, blood-pressure, and body temperature
- amygdala** • helps form emotional reactions
- pons** • connects the medulla oblongata and cerebellum with the rest of the brain
- cerebellum** • controls movement and balance
- pituitary gland** • controls other glands and influences growth
- hippocampus** • helps form and store memories
- thalamus** • relays sensory information to the cerebral cortex
- corpus callosum** • carries information from one side of the brain to the other
- medulla oblongata** • controls vital functions like breathing and heart rate